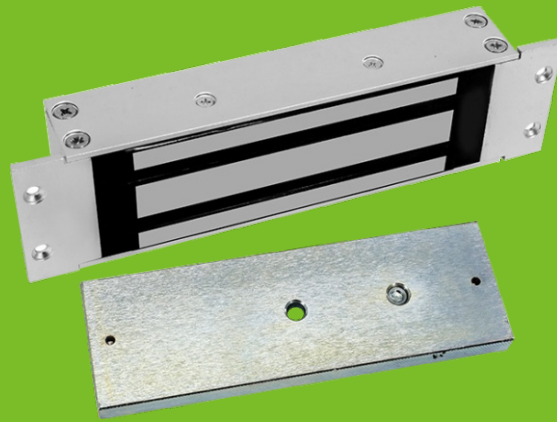


Mortise mount lock  
500KG (1200Lbs)

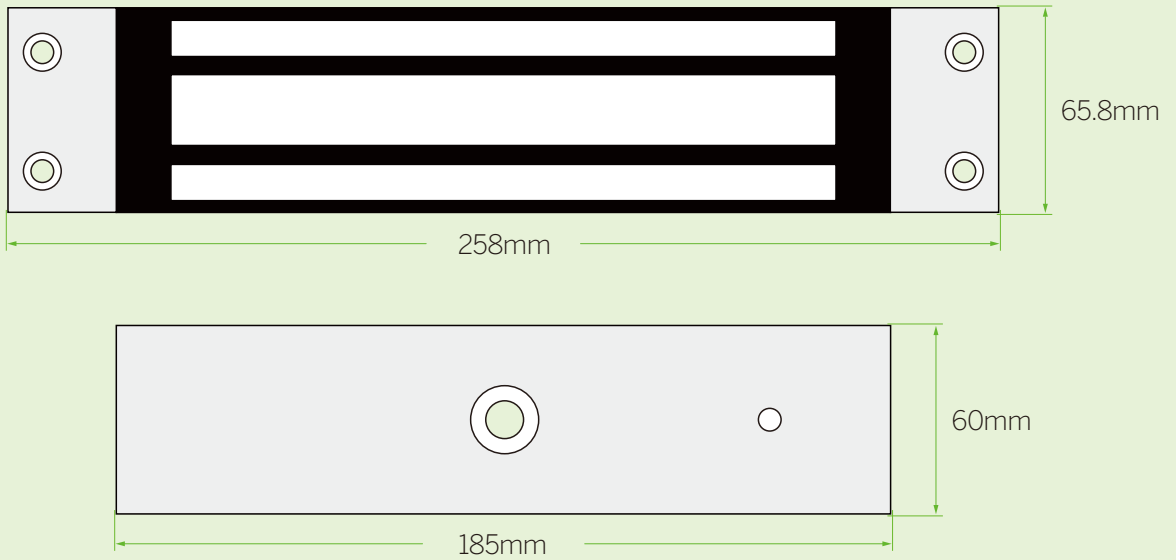


EM-1200T

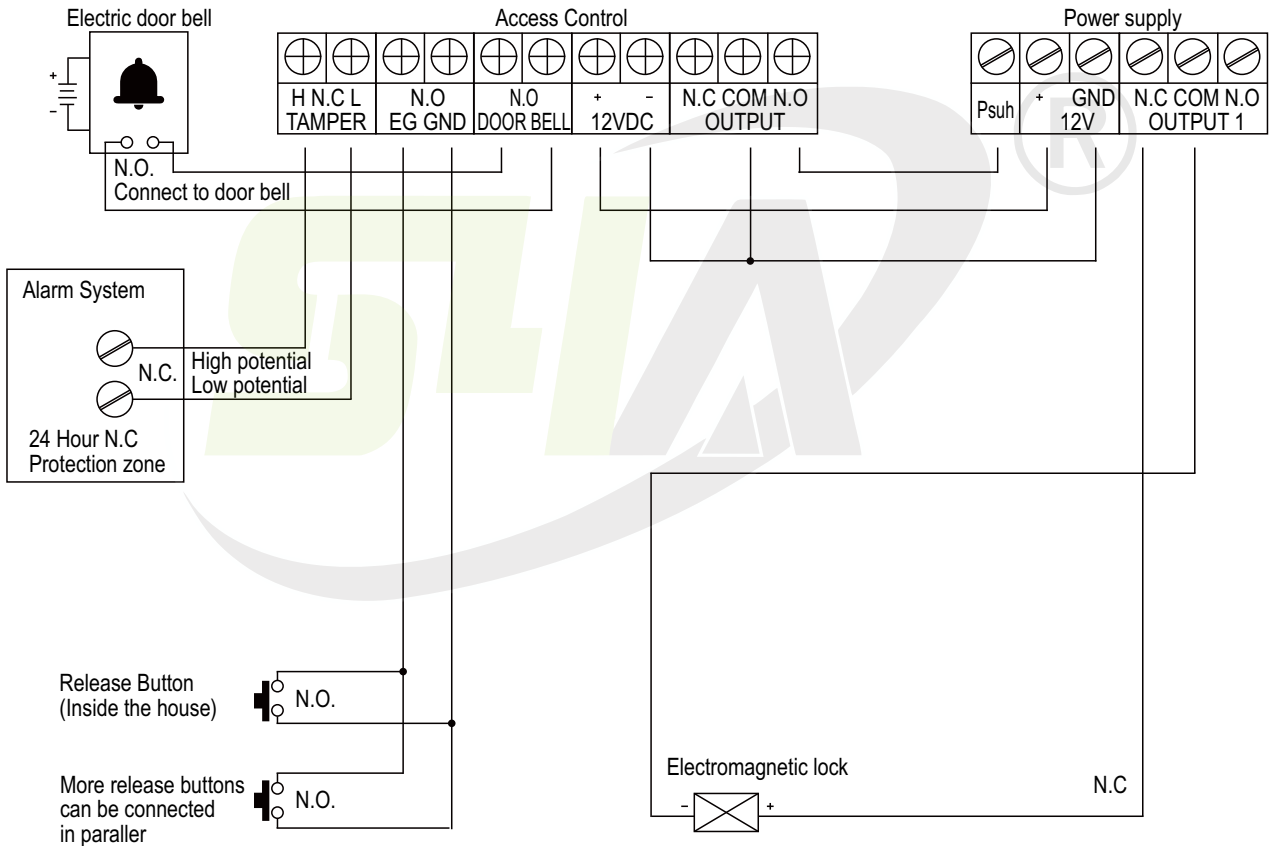
Specifications

|                       |                           |
|-----------------------|---------------------------|
| Model No.             | EM-1200T                  |
| Lock size             | 258Lx65.8Wx38.8H(mm)      |
| Armature Plate        | 180Lx60Wx13H(mm)          |
| Holding Force         | 500kg(1200Lbs)            |
| Voltage               | DC12V or DC24V            |
| Current Draw          | 12V/420mA 24V/210mA       |
| Surface Temp          | ≤20°C                     |
| Operating Temp        | -10°C ~ 55°C (14°F~131°F) |
| Finishes for shell    | Anodized Aluminum         |
| Finishes for Magntic  | Zinc                      |
| Finishes for Armature | Zinc                      |
| Weight                | 4.5kg                     |

# Dimensions



# Wiring diagram



S4A Industrial Co., Limited

Address: The 2nd floor, Jinmin'an Industrial Zone, #529, Bulong Rd.  
Bantian St. Longgang Dist. Shenzhen, PRC.. CN 518131



Tel: +86 755 29450011

[www.s4a-access.com](http://www.s4a-access.com) / Email: [sales@s4a-access.com](mailto:sales@s4a-access.com)  
Mob/Whatsapp/Wechat/Viber: +86 134 1050 0721